

*Quantum Leaps
in College Completion*

FAIR 2016



HCC

Intro: To video

- <http://video.wedu.org/video/2365567871/>

Intro: The Issue

- **Achieving the National Goal in College Completion**
- **HCC illustration. To SAS-BI**

Our Conversation: Quantum Leaps in College Completion

- Auto graduation
- Near graduation
- Reverse transfer graduation
- *fuse*: an articulation to increase graduation

Auto Graduation



End of term grade submission.

Graduation Office processes graduation applications.

IR Office runs auto-graduation program in SAS-BI; provides list to Graduation Office.

Graduation Office conducts degree audits; completes & notifies eligible students.

Auto-graduated completions are reported to the state along with those who applied.

Auto-Graduation Impact on College

Total Number of Students Auto-Graduated by Reporting Year

	2010-11*	2011-12	2012-13	2013-14	2014-15	2015-16***	TOTAL
A.A.	55	187	226	303	299	122	1,192
A.S./A.A.S.	n/a	19**	31	60	50	12	172
Certificates	99	380	723	593	393	238	2,426
TOTAL	154	586	980	956	742	372	3,790

*The first auto-graduation occurred Spring 2011; the 2010-11 Reporting Year does not include Summer or Fall 2010.

**Auto-graduation for A.S./A.A.S occurred for the first time Fall 2011

***The 2015-16 Reporting Year is still in progress.



HCC

Auto-Graduation Impact on College: 51% Increase

	2009-10	2010-11	2011-12	2012-13	2013-14	2014-15
College Credit	3,144	3,594	4,696	5,049	4,349	4,757
Total	3,144	3,594	4,696	5,049	4,349	4,757



HCC

Near Graduation

- **Back to SAS-BI**

Autograd & Reverse Transfer

- Existing auto-graduation processes eased adoption of Reverse Transfer.
- → Identification of Reverse Transfer potentials
- → Relationship with Graduation Office
- Possible Issue: Auto-graduation likely decreases the number of Reverse Transfer potentials.



HCC

Moving Toward Reverse Transfer (RT)

- **Tampa Bay RT MOU signed February 4, 2013 -**
Florida college centric
- USF
- HCC
- Pasco-Hernando
- St. Pete
- *Polk*
- *SCF-Manatee*



HCC

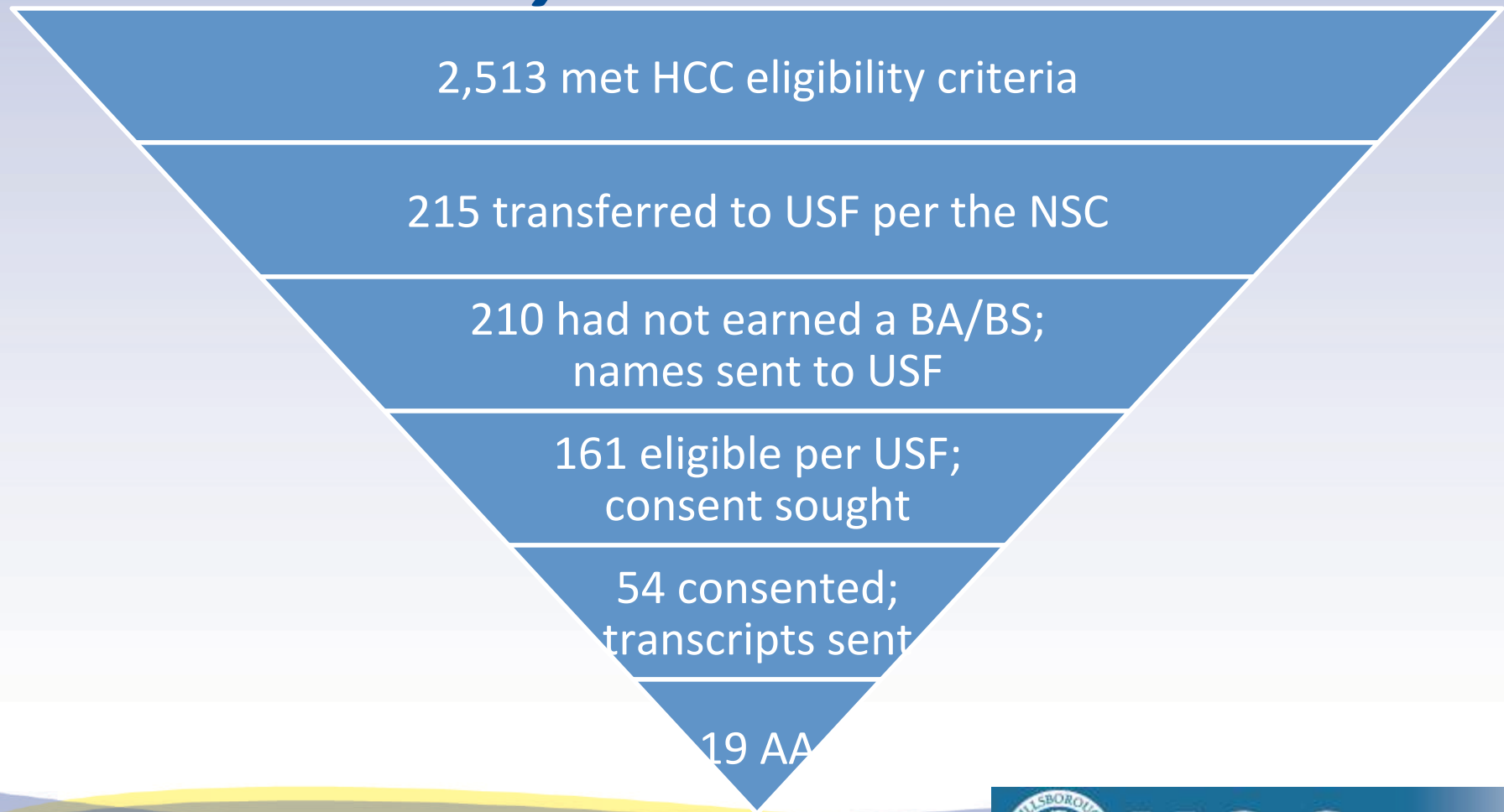
Tampa Bay MOU: Components

- Acknowledges Gen. Ed. reciprocity
- Identifies procedure to determine student RT eligibility
- Defines college eligibility rules to confer degree, *plus a tie-breaker*
- Recommends Policy/Procedure



HCC

Reverse Transfer Implementation *by the Numbers*



HCC

Status: Reverse Transfer

- **2nd Tampa Bay RT MOU signed June 2014:
USF centric, application consent, expansion
to SCF-Manatee**



HCC

Reverse Transfer Recommendations

- **A state implementation**
- **Sign up with National Student Clearinghouse reverse transfer program**

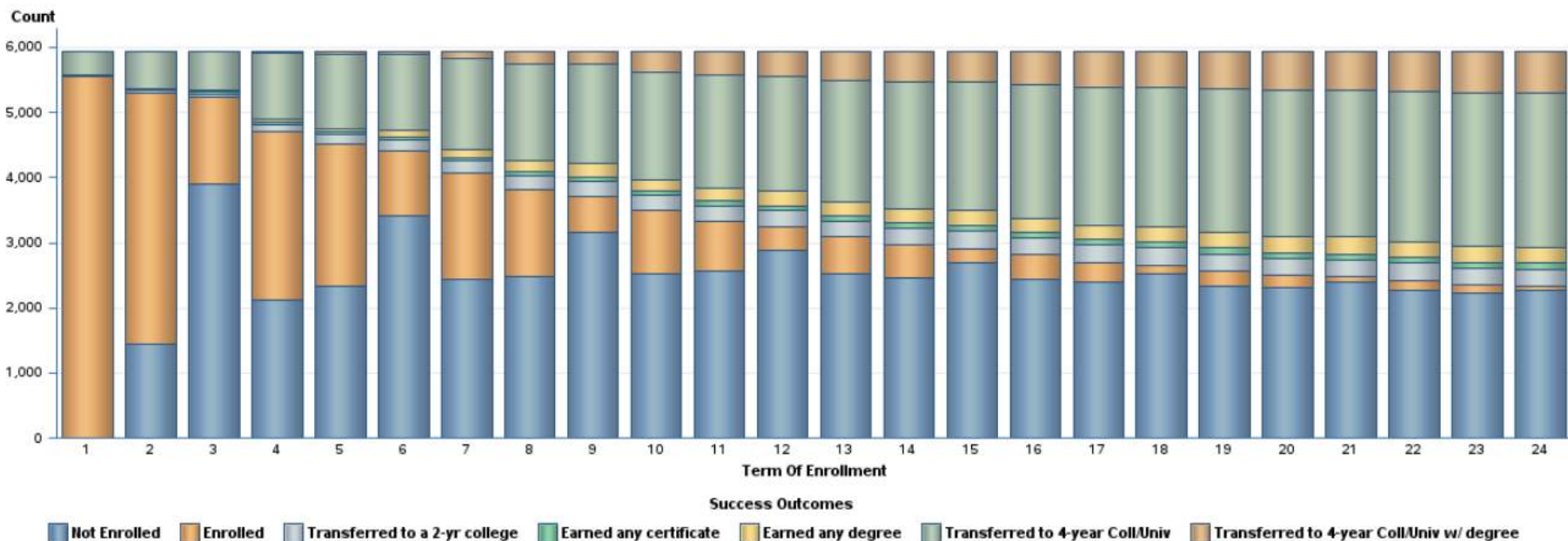
Fuse: An Articulation to Increase College Completion



fuse

Student Success

Student Success Outcomes by Term of Enrollment for a Cohort of Students Entering HCC for the First Time in Fall 2006



	Not Enrolled	Enrolled	Transferred to a 2-yr college	Earned any certificate	Earned any degree	Transferred to 4-year Coll/Univ	Transferred to 4-year Coll/Univ w/ degree	Total
1	.	5,561	.	11	1	372	.	5,945
2	1,447	3,848	42	19	14	572	3	5,945
3	3,901	1,337	51	23	29	600	4	5,945
4	2,126	2,580	117	30	37	1,032	23	5,945
5	2,325	2,189	151	39	48	1,147	46	5,945

fuse

- **An articulation with more rigor**
- **Grad Paths**
- **Student Cohort Tracking using SAS-BI**

*Quantum Leaps
in College Completion*

FAIR 2016



HCC