



The Evolution of the PULSE BI Consortium

Florida Association of Institutional Research
2016 Annual Conference
January 28, 2016





Jesse Coraggio

VP, Institutional Effectiveness and Academic Services

St. Petersburg College

Dave Weber

Exec. Director, Planning and Effectiveness

Lake Sumter State College

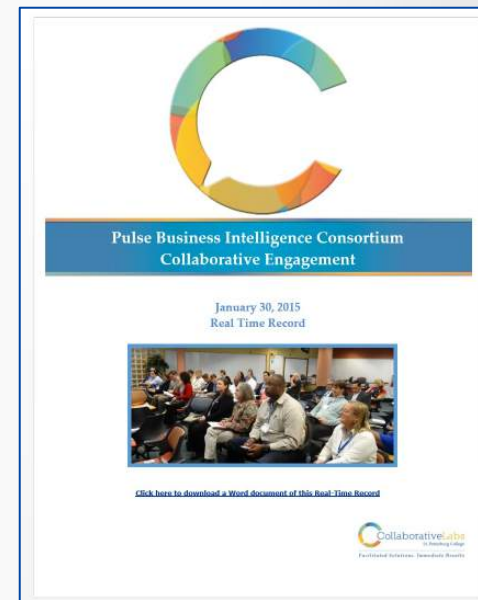
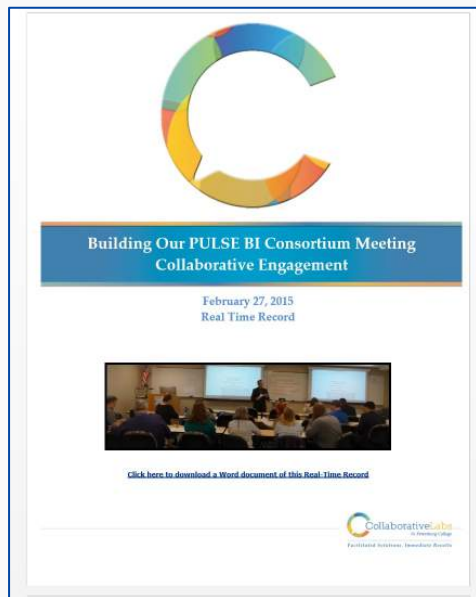
Presenters

The “Implementation of Business Intelligence” was rated lowest of all best practices across 21 institutions.



Moving the Needle 2014

- Meeting 01 - January 30, 2015
 - Review Institutional Data Needs
 - Identify Institutional Support Needs & Consortium Model
 - Define Initial Framework for the Consortium Model



- Meeting 02 - February 27, 2015
 - Value Proposition
 - Individual Value Statements
 - Review BI Consortia Budgets
 - Refine Consortia Agreement

Initial Planning Meetings

The consortium is a strong partnership of Florida college institutions working together to build and support a system that provides transparent, actionable, “real-time” data that facilitates institutional decision-making at all levels in support of student success.

By working together, the consortium can create a rapid-response system that is flexible, customizable and efficient.

Value Proposition



- 1. A focus on student success** – having real-time information that is actionable so that we can make timely decisions to improve student success.
- 2. Collaboration** – all institutions will contribute to the improvement of the system through resource and knowledge sharing within an environment of trust – transparent, open, honest environment offering equal sharing of ideas.
- 3. Equity** – equal say in decision-making as well as fair distribution of consortium resources, outcomes, and benefits. Equal opportunity – equal vote for all participating schools.

Value Statements



Pulse BI Consortium



- Steering Committee made up of one member from each school.
- Elected Chair and Chair-Elect, who becomes the chair the following year.
- New members can be brought in each year with a 75% vote from the Steering Committee.

**PULSE BI (BUSINESS INTELLIGENCE)
CONSORTIUM AGREEMENT**

THIS AGREEMENT is made this first day of July, 2015,

BETWEEN

Colleges within the Florida College System

WHEREAS PULSE BI Consortium Members, each a state college within the Florida College System, and hereinafter referred to individually as a "Member" and collectively as "Members" or "Consortium Members" interchangeably, wish to form a Consortium to convene to collaboratively facilitate the development and enhancement of a business intelligence system in the furtherance of capturing and sharing institutional data and analytics, and to leverage such technology and management systems in furtherance of student academic success and academic progression at their respective institutions, and

WHEREAS this Consortium Agreement sets out the relationship and collaborative efforts between the Consortium Members as to the Consortium's mission, goals, objectives, and organization of the work;

IT IS HEREBY AGREED AS FOLLOWS:

1. DEFINITIONS

In this Agreement, such terms shall have the following meanings:

| | |
|----------------------------|--|
| "Confidential Information" | Refers to all information determined to be of a confidential nature that is disclosed by one Member to another for the purpose of effectuating the Consortium Agreement, Consortium outcomes, projects and ongoing development deliverables, including, without prejudice to the generality of the foregoing, any ideas and concepts; financial, marketing, development or manpower plans; computer systems and software; created products or services; and systems, records, reports, documents, papers and other materials created pursuant to this Agreement. |
| "Consortium" | Refers to the Member institutions collectively. |
| "Consortium Members" | Refers to the Members of the Consortium, individually or collectively. |
| "Licensed Materials" | Under this Agreement, licensed materials shall be defined as the PULSE BI software and systems as it exists upon commencement of this Agreement, and as |

1

Consortia Agreement

SharePoint

BROWSE PAGE PUBLISH ITEMS LIST

SPC Information Community BI Demo Committees & Groups Pulse BI

Pulse BI Consortium

Home

- Shared Documents
- Lists
- Calendar
- Tasks
- Discussions
- Team Discussion
- Pulse BI Wiki
- Site Contents

Welcome to Pulse BI Consortium

This is the home site for the Pulse BI Consortium. It contains discussions, documents, and other artifacts related to the Pulse BI project.

Announcements

| ✓ | Title | Modified |
|---|----------------------------|----------------|
| | Pulse BI Wiki site created | April 20, 2015 |

Shared Documents

| ✓ | Name | Modified | Modified By |
|---|--|--------------------|------------------|
| | Project Planning | July 30, 2015 | Zoran Stanisic |
| | Pulse BI Consortium Agreement | July 2, 2015 | Angelica Sanchez |
| | Pulse BI Consortium Meetings | June 15, 2015 | Angelica Sanchez |
| | Pulse BI Demo | February 3, 2015 | Zoran Stanisic |
| | PulseBI Configuration | September 28, 2015 | Zoran Stanisic |
| | Technical Architecture | February 20, 2015 | Zoran Stanisic |
| | Value Proposition and Operating Values | June 16, 2015 | Angelica Sanchez |
| | MTN 15 Real-Time Record | November 19, 2015 | Angelica Sanchez |

<https://info.spcollege.edu/BI/Consortium/SitePages/Home.aspx>

Public SharePoint Site



Requirements

- Define Data Dictionary (Colleges and Consortium)

Development

- Generate Sample Data Extracts (Consortium)
- Develop Pulse BI Data Warehouse (Consortium)
- Develop Pulse BI Data Marts (Consortium)
- Develop Pulse BI Dashboards (Consortium)

Technology Setup

- SQL Database Setup (Colleges)
- SSAS Database Setup (Colleges)
- SharePoint Setup (Colleges)

Work Structure



Implementation

- Develop Extracts for Pulse BI (Colleges)
- Deploy Pulse BI Data Warehouse (Colleges)
- Deploy Pulse BI Data Marts (Colleges)
- Deploy/Modify Pulse BI Dashboards (Colleges)

Training

- Train the Trainer (Consortium)
- Train the End Users (Colleges)

Support

- System Support (Colleges)
- Pulse BI Tool Support (Consortium)

Work Structure

Nearly 1,300 Attributes/Measures which include:

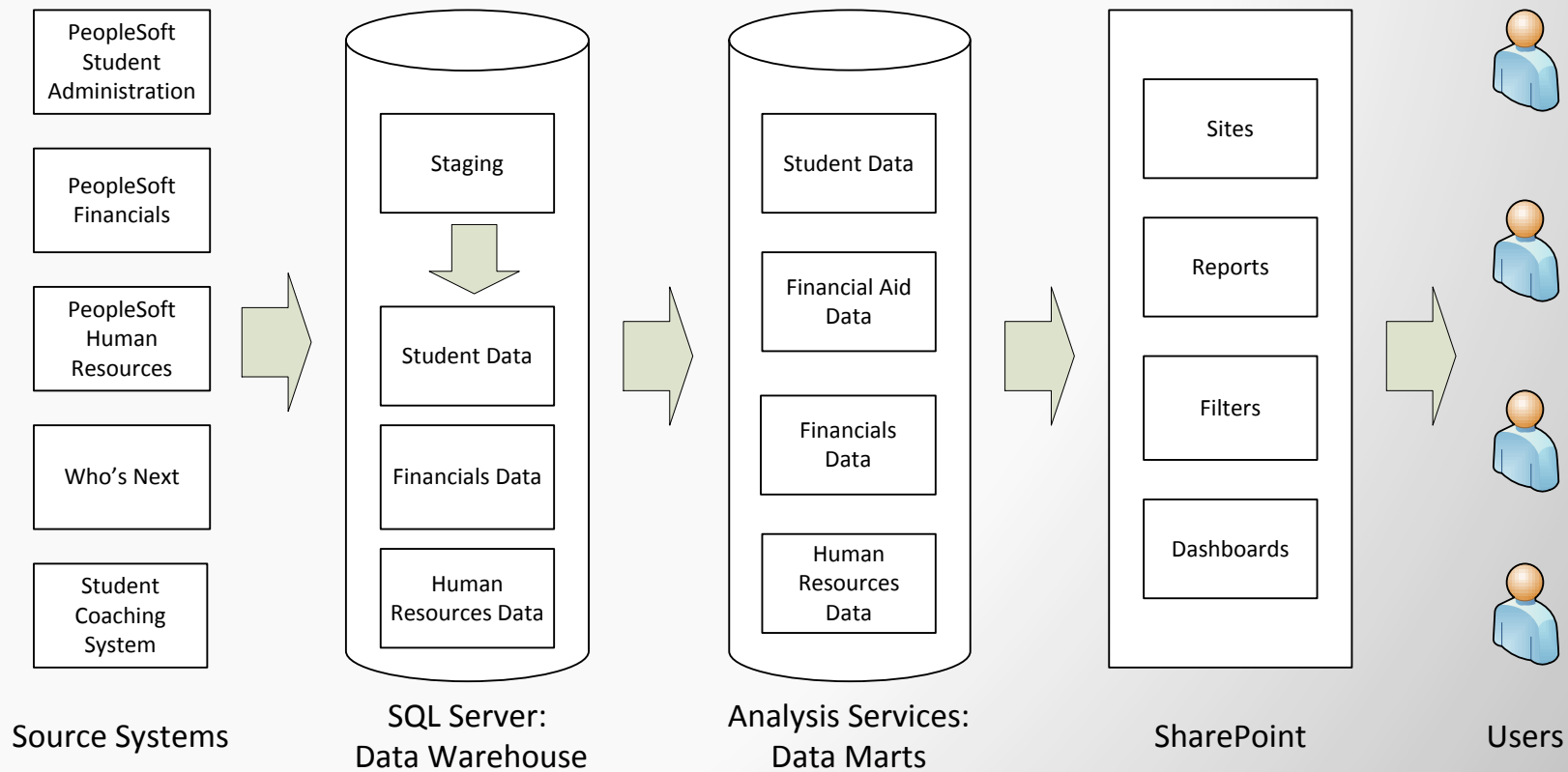
- Student
- Curriculum
- Enrollment
- Recruitment
- Graduation
- Registration
- Instructor
- Financial Aid
- Student Support

Data Definitions

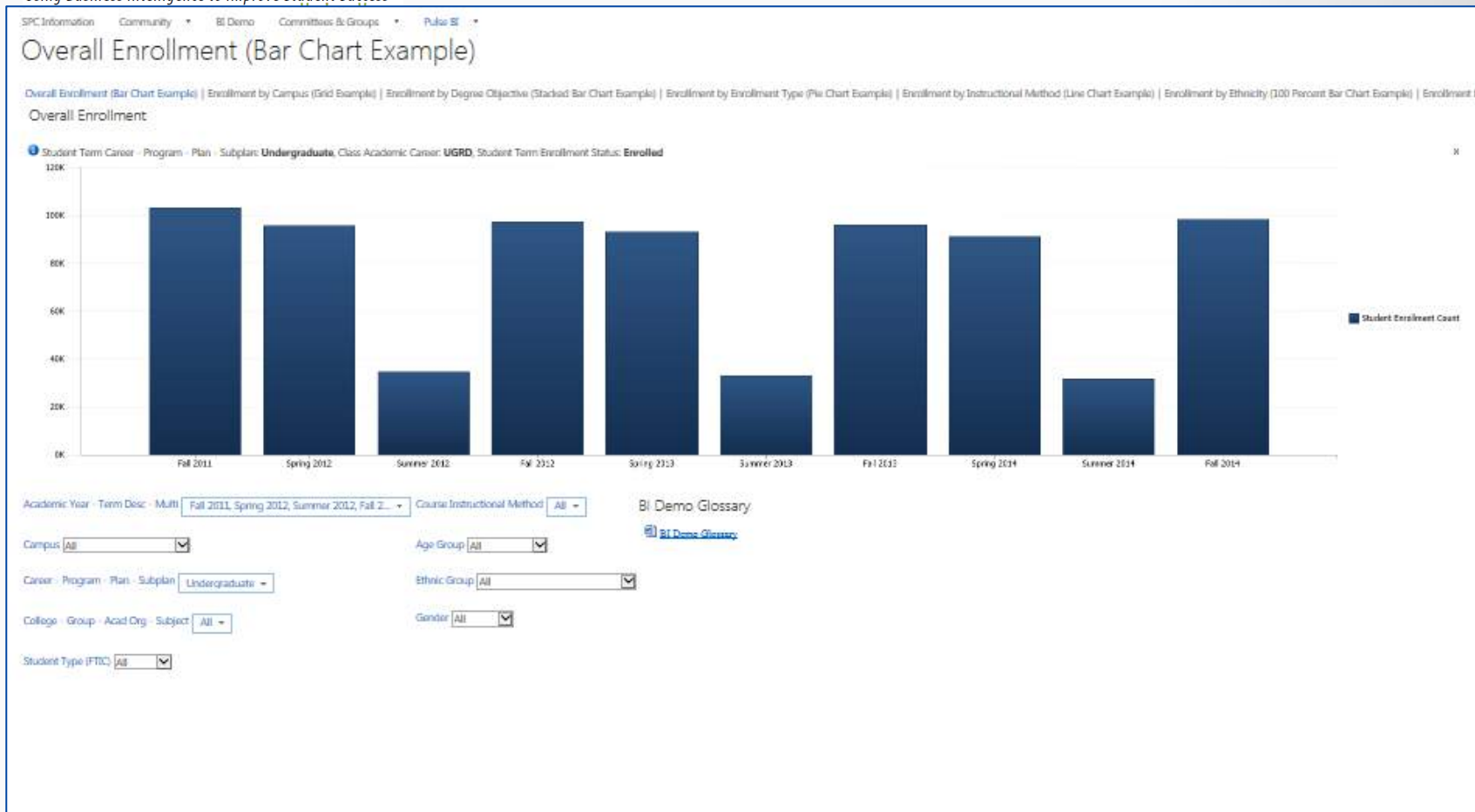
Key Conversations

- Data Governance and Management
- Data Quality
- Data Access
- Data Integration
- Data as Strategy

An Enterprise Process



Pulse BI System Architecture



[https://info.spcollege.edu/BI/bimtn/Dashboards/Enrollment/Overall%20Enrollment%20\(Bar%20Chart%20Example\).aspx](https://info.spcollege.edu/BI/bimtn/Dashboards/Enrollment/Overall%20Enrollment%20(Bar%20Chart%20Example).aspx)

Demonstration

SPC One College Support Academic Departments College Administration Committees & Groups Executive Leadership SPC Locations SPC Business Intelligence Strategic Initiatives Student Services Training

One College Support > SPC Business Intelligence > Student Information - Detail > Pages > Student_BI_Landing

Lists

- Student System BI Requests

Dashboards

Data Connections

Libraries

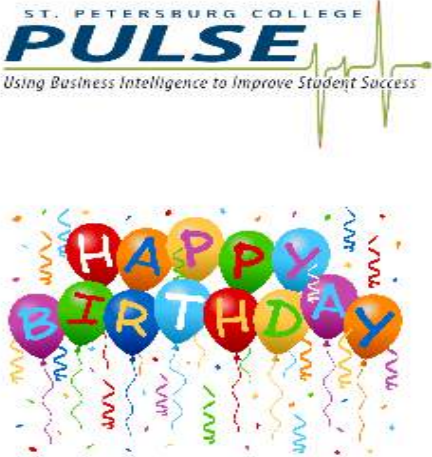
PerformancePoint Content

Student System BI Configuration

Student System BI Requests

Web Analytics - Student System Information for Administrators

Site Contents



Pulse went live 12/15/2011!

| |
|---|
| <p>For more information contact Institutional Research and Reporting:</p> <p>Edin Jakupovic, Research Analyst 727 791-2529 edj@spcollege.edu</p> <p>Theresa Dimmer, Research Analyst 727 302-6853 dimmer.theresa@spcollege.edu</p> <p>Dr. Melinda Hess, Institutional Research and Reporting Coordinator 727 634-7234 hess.melinda@spcollege.edu</p> <p>For accessing and training information contact:</p> <p>Maria De Laival, Administrative Services Specialist 727 712-5237 deLaival.maria@spcollege.edu</p> |
|---|

Student System Dashboards

System information accessible at these dashboards is provided for official use only. Appropriate users should preserve student privacy as defined by SPC Procedure, Security of Student Records, 19-0275-4-52.

Enrollment by Term

- Headcount Enrollment By Term
- Daily Enrollment Dashboard
- Enrollment Trends By Term
- Midtown Enrollment By Term

Enrollment by Day

- Enrollment By Day
- Midtown Enrollment By Day

Success Rates

- Success Rates By Campus
- Success Rates By Acad Org

Student Outcomes

- Cohort Retention By Term
- Graduates

Course Enrollment

- Course Enrollment

Program Review

- Academic Program Viability Report
- CAPR

College Experience

- College Experience Outcomes
- Early Alert
- Out of Class By Term
- My Learning Plan
- Career Status

Student Records

- Program Plan
- Academic Standing
- Life Plan

Beta Dashboards

- Daily Enrollment Trends - Beta
- Flexible Placement - Beta
- PSAV - Beta
- Subsequent Course - Beta
- Course Retention Indicator - Beta
- First Time in Plan - Beta
- Smart Start - Beta

https://oncollegesupport.spcollege.edu/spcpulse/SAA/Pages/Student_BI_Landing.aspx

(Internal Link)

Demonstration



Questions